

REF. STK  
SAVED FROM J0391  
J0205-J0208,J0103-J0108  
M0971-M0974,M0873-M0874

BODY TYPE: FORMED ALUMINUM  
TANK TYPE: DRY SIDE

DOC. NO. : E018-1 DRAWING TEMPLATE  
REV. C 2017-02-05

SPECIFICATION

**CHASSIS:**  
-FREIGHTLINER M2 106 CREW CAB  
-36,000 LB GVWR; 12,000 LB FRONT / 24,000 LB REAR  
-DIESEL ENGINE, DD8 7.7L 6 CYL DUAL STAGE 350 HP  
-AUTOMATIC TRANSMISSION, ALLISON 3000 EVS

**PUMP:**  
-DARLEY MIDSHIP PSM1250  
-1250 USGPM (5000 LPM) (1050 IGPM) AT 150 PSI  
-ULC TESTED BY INDEPENDENT 3rd PARTY  
-FOAM SYSTEM FOAM PRO 1600 CLASS A

**PLUMBING:**  
-2 x 6" SUCTION, (1)ROAD (1)CURB  
-1 x 2 1/2" GATED SUCTION, (1)ROAD  
-4 x 2 1/2" DISCHARGE PORT, (2)ROAD (1)CURB (1)REAR  
-2 x 1 1/2" CROSS LAY'S-FOAM  
-1 x 3" MONITOR STAND PIPE  
-4" TANK TO PUMP, W/3" BUTTERFLY VALVE  
-2" TANK FILL ELKHART

**TANK:**  
-800 IG (960 USG) WATER TANK  
-25 IG (30 USG) SINGLE INTERNAL FOAM TANK

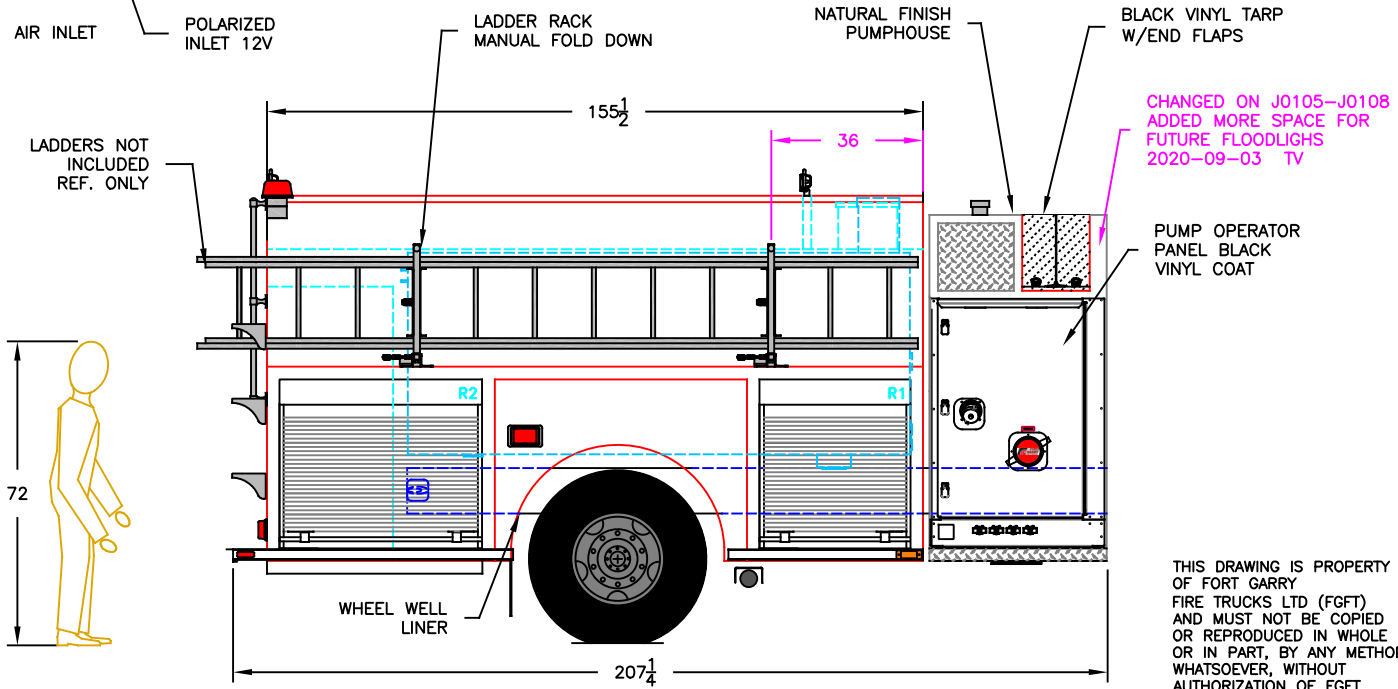
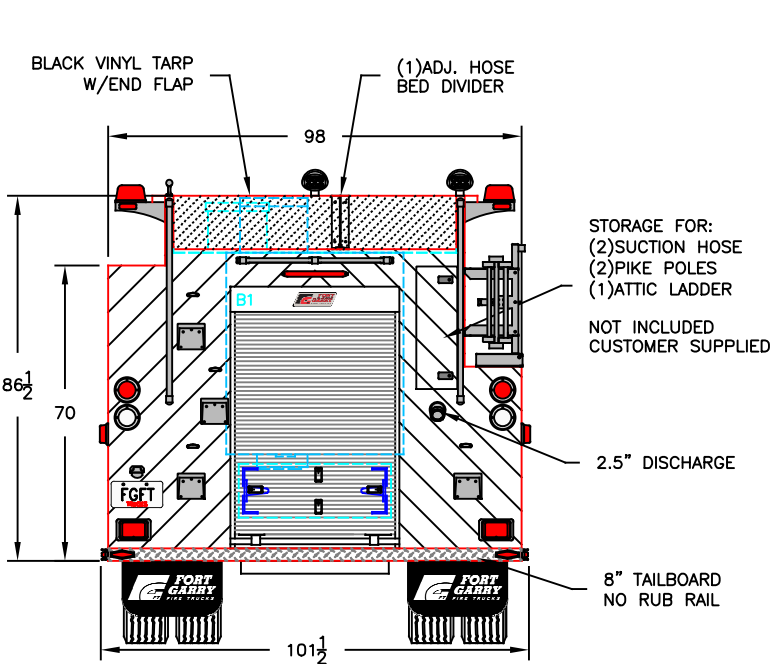
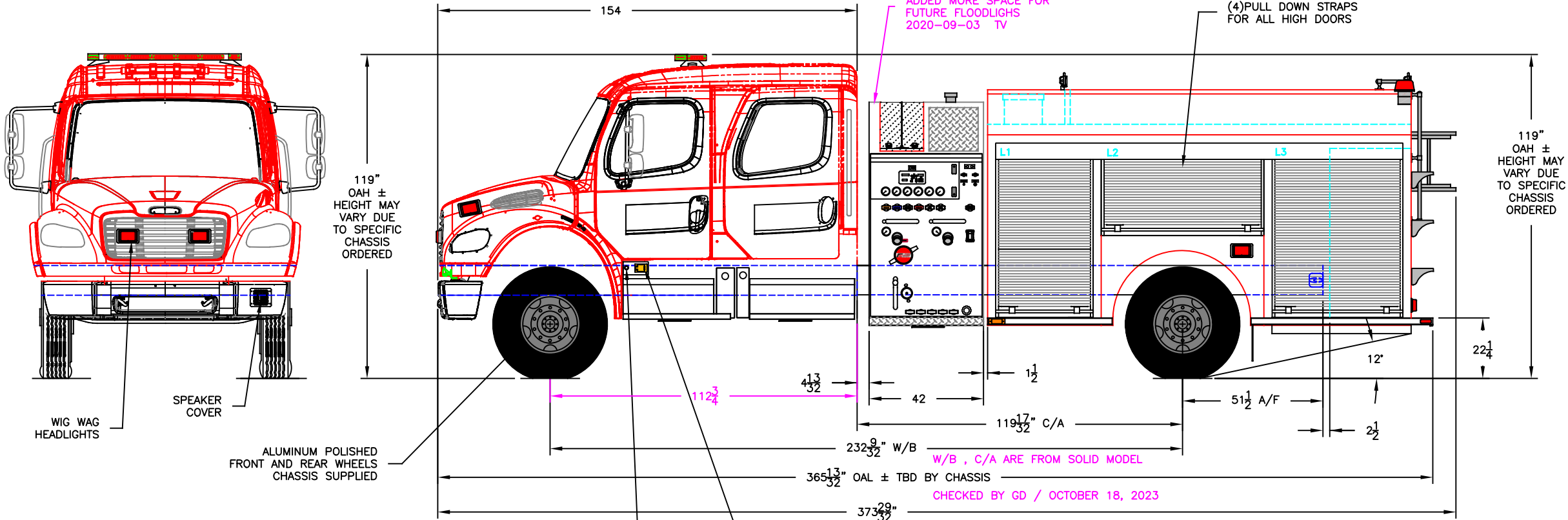
**BODY:**  
-CRUSADER FLAT BACK ALUMINUM HIGH/LOW  
-BODY UNDERCOATING CORASHIELD

**EMERGENCY EQUIPMENT-ACCESSORIES:**  
-LIGHT BAR 56" LED  
-SIREN  
-100W SPEAKER  
-2 x REAR BEACONS RED  
-2 x FLOOD LIGHTS LED  
-1 x HAND HELD SPOT LIGHT IN CAB  
-2 x GRILLE LIGHTS RED  
-4 x INTERSECTION LIGHTS RED  
-2 x REAR LOWER WARNING LIGHTS RED  
-8 x GROUND LIGHTS  
-AIR CHARGING PROVISION  
-BATTERY CHARGING PROVISION  
-ANTENNA MOUNT

**MODEL:**  
WHELEN JUSTICE 56"  
WHELEN 295SLSA1  
WHELEN SA315P  
WHELEN L31HRFN LED  
DTI 010Wx6 12V LED  
COLLINS  
WHELEN 600 LED  
WHELEN 600 LED  
WHELEN 600 LED  
LUMA BAR H20-12"  
AIR INLET  
12V POLARIZED INLET

COMPT.	COMPARTMENT FRAME DIMENSIONS
L1	36W x 65H x 26D
L2	60W x 35H x 26D
L3	48.25W x 65H x 26D
R1	36W x 40H x 26D
R2	48.25W x 40H x 26D
B1	40W x 62H x 30D

- THE DRAWING IS FOR REFERENCE PURPOSE, ONLY. THE DRAWING MAY OR MAY NOT SHOW ALL ITEMS AS DESCRIBED IN THE WRITTEN DETAILED SPECIFICATION.
- INCLUSION OF AN ITEM ON THE DRAWING DOES NOT CONSTITUTE INCLUSION OF THAT ITEM WITH THE FINAL DELIVERY OF THE UNIT. SPECIFICATION SHALL BE FINAL AUTHORITY TO BE DETERMINED WHAT IS SUPPLIED ON THE APPARATUS.
- THE EFFECTIVE COMPARTMENT SIZE FOR ROLLUP DOORS WILL BE REDUCED APPROX. 10" IN HEIGHT, 2" IN DEPTH AND 2" IN WIDTH FROM SHOWN FRAME OPENINGS AND 2" IN HEIGHT, 3" IN DEPTH AND UP TO 4" IN WIDTH FOR PAN DOORS. DIMENSIONS TOLERANCE  $\pm 1/4"$
- PUMP RATING AND TANK CAPACITY ARE SHOWN AS NOMINAL VALUES. THE ACTUAL VALUES MAY VARY.
- CHASSIS GVWR SHOWN IS THE MINIMUM REQUIRED FOR STANDARD BODY DEPENDING OF OPTIONS, GVWR MAY NEED TO BE INCREASED.
- COMMERCIAL OEM CAB STEPS MAY NOT MEET ULC STANDARD. SELECT CUSTOM STEPS WHEN REQUIRED
- OVERALL HEIGHT IS IN LOADED CONDITION, UNLOADED HEIGHT MAY BE 4" ABOVE HEIGHT SHOWN. AFTER TRUCK IS COMPLETED ADDITIONAL STEPS MAY BE REQUIRED TO MEET THE STANDARD.
- DIMENSIONS SHOWN ARE APPROXIMATE AND ARE SUBJECT TO CHANGE AS MAY BE FOUND NECESSARY DURING DESIGN. DO NOT SCALE DRAWING.
- MINOR DETAILS AND REFLECTIVE STRIPING ARE NOT SHOWN.



**FORT GARRY**  
FIRE TRUCKS  
WWW.FGFT.COM  
WINNIPEG, MANITOBA, CANADA 1-800-565-3473

DESCRIPTION:  
CRUSADER 800 IG - STK

SCALE:  
1:45

DWG. BY:  
TV

CHK. BY:

MODEL:  
CPS08D5

DATE:  
18 OCT 2023

SHEET:  
1 OF 1

DWG. NO. :  
J0466-J0468  
STK

A	CRM DRAWING	TV	18 OCT 2023
REV	DESCRIPTION OF CHANGE	BY	DATE