



STOCK – EMERGENCY RESCUE - SAM

All photos are for illustration purposes only.

FORGED FROM FIRE, ENGINEERED FOR THE EXTREME!



SAM integrated total water control system with 10" touch screen display

Spartan Metro Star Chassis, 10" Raised Roof

Cummins L9 Engine, 380 HP

Hale Midship Pump

800 I.G. Tank and

Foam System

Please contact our sales department for more information.



Exclusive Distributors



1-800-565-3473

RR#2, 53 Bergen Cutoff Road, Winnipeg, MB R3C 2E6
FX: 1-204-694-3230 WWW.FGFT.COM



IF NOT RETURNED TO FGFT BY THE DATE INDICATED BELOW, WE WILL PROCEED WITH FABRICATION AS PER THE DRAWING

CUSTOMER APPROVAL	
SALES SIGNATURE:	
CUSTOMER SIGNATURE:	
DATE:	
RETURN TO FGFT BY:	DECEMBER 03, 2019
REVISION BY:	
REVISION DATE:	
ACCEPTED AS IS	<input type="checkbox"/>
REUSE AS NOTED AND RE-SUBMIT:	<input type="checkbox"/>

BODY TYPE: EXTRUDED ALUMINUM
TANK TYPE: DRY SIDE SIDE

DOC. NO.: ED18-1 DRAWING TEMPLATE
REV. C 2017-02-05

SPECIFICATION

CHASSIS:
-METRO STAR_MFD 10 INCH RAISED ROOF
-47,000 LB GVWR; 20,000 LB FRONT / 27,000 LB REAR
-DIESEL ENGINE, CUMMINS L3 EPA 2017, 380 HP
-AUTOMATIC TRANSMISSION, ALLISON 3000 EVS

BUILD:
-HALE MIDSHIP QMAX-VS 1500
-1500 USGPM (5678 LPM) (1249 GPM) AT 150 PSI
-ULC TESTED BY INDEPENDENT 3rd PARTY MEETS NFPA 1901-2016
-FOAM SYSTEM: HALE CLASS A

PLUMBING: STAINLESS STEEL, SCHEDULE 10
-2" x 6" SUCTION, (1)ROAD (1)CURB MV BOTH
-2" x 2 1/2" GATED SUCTION, (1)ROAD (1)CURB BOTH ELECTRIC
-4" x 2 1/2" DISCHARGE, (2)ROAD (1)CURB (1)REAR-FOAM, ALL
ELECTRIC 1/2" FRONT TRASHLINE
-2" x 1 1/2" SPEEDLAYS - FOAM, ELECTRIC
-1" x 3" MONITOR STAND PIPE - FOAM - ELECTRIC
-1" x 4" STORZ DISCHARGE W/3" PLUMBING, (1)CURB ELECTRIC
-4" TANK TO PUMP, W/3" AKRON BALL VALVE - ELECTRIC
-2" TANK FILL AKRON ELECTRIC

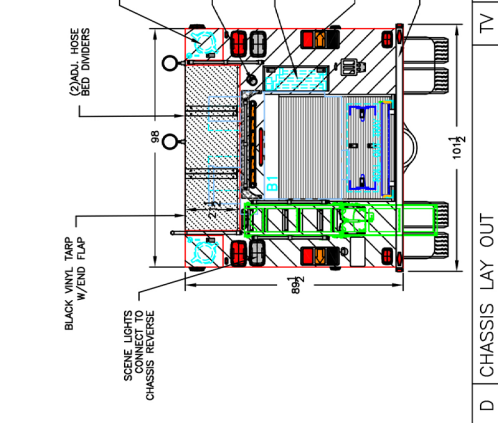
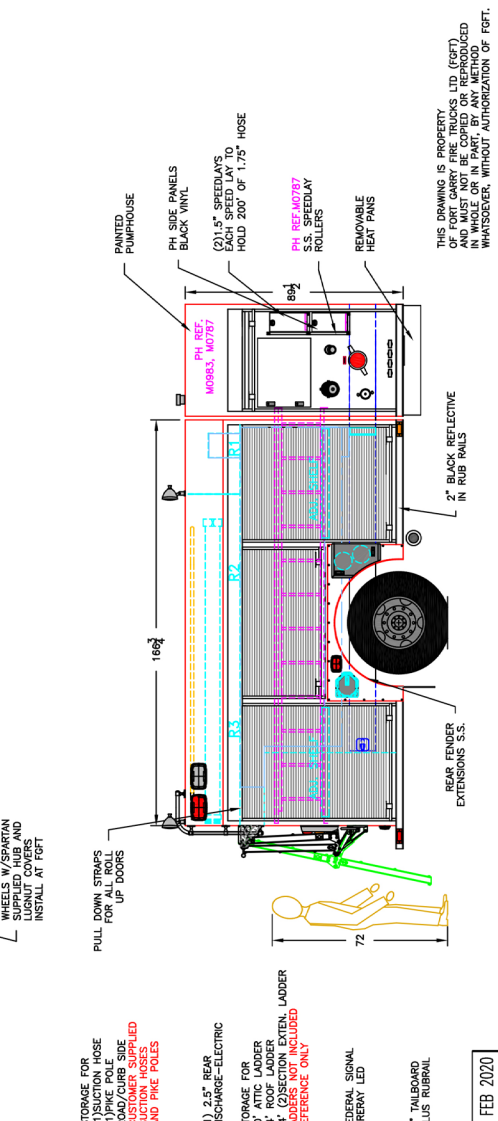
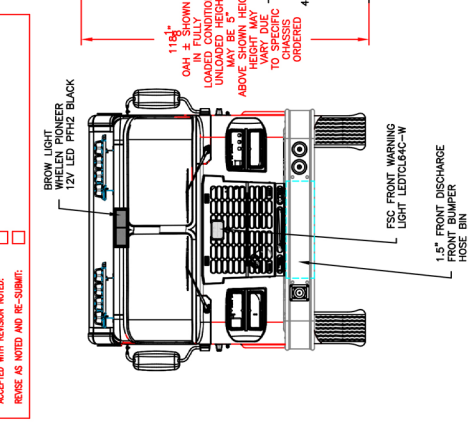
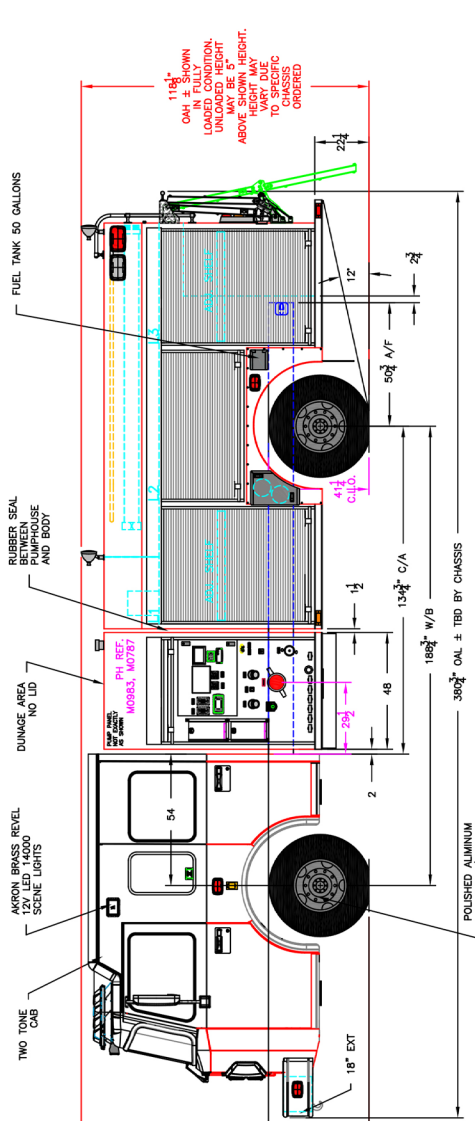
TANK:
-200 G (966 USG) WATER TANK
-200 G (966 USG) SINGLE INTERNAL FOAM TANK
BODY:
-FR NO STANCHIONS ALUMINUM HIGH/HIGH
-BODY UNDERCOATING - CORASHIELD

EMERGENCY EQUIPMENT-ACCESSORIES:
-SIREN SPEAKER
-2" x GRILLE LIGHTS RED
-2" x SIDE UPPER WARNING LIGHTS RED
-2" x REAR UPPER WARNING LIGHTS RED
-2" x REAR LOWER WARNING LIGHTS RED
-6" x GROUND LIGHTS
-2" x SCENE LIGHTS
-4" SCENE LIGHTS
-AIR CHARGING PROVISION
-BATTERY CHARGING PROVISION
-1" x ANTENNA MOUNT

MODEL:
FSC VS18RS-NFPA1
WHELEN SP1238MC
DTL 010W6 12V LED
WHELEN M6 LED
FSC FREWAY 9x7 LED
FSC FREWAY 9x7 LED
FSC FREWAY 6x4 LED
LUMA BAR H20-12" LED
FSC FREWAY 9x7 LED
KUSSMAUL AUTO
CHARGE 40LPC

COMPT.	COMPARTMENT FRAME DIMENSIONS
L1	48.25W x 69H x 27D
L2	62.25W x 40H x 27D
L3	48.25W x 69H x 27D
R1	48.25W x 69H x 15/27D
R2	62.25W x 40H x 15D
R3	48.25W x 69H x 15/27D
B1	44W x 54H x 30D

1. THE DRAWING IS FOR REFERENCE PURPOSE ONLY.
2. THE DRAWING MAY OR MAY NOT SHOW ALL ITEMS AS DESCRIBED IN THIS SPECIFICATION. THE FINAL DELIVERY OF THE UNIT SHALL BE OF THAT ITEM WITH THE FINAL DELIVERY OF THE UNIT. SPECIFICATION SHALL BE THE EFFECTIVE DATE OF THIS SPECIFICATION.
3. THE EFFECTIVE DATE OF THIS SPECIFICATION SHALL BE REDUCED TO APPROX. 10" IN HEIGHT, 2" IN DEPTH AND 2" IN WIDTH FROM SHOWN FRAME FOR PUMP DOORS.
4. PUMP DOORS AND TANK CAPACITY ARE SHOWN AS NOMINAL VALUES.
5. CHASSIS GVWR SHOWN IS THE MINIMUM REQUIRED FOR STANDARD BODY DEPENDING ON OPTIONS. GVWR MAY NEED TO BE INCREASED.
6. SELECT CUSTOMER OPTIONS THAT ARE NOT RECOMMENDED.
7. OVERALL HEIGHT IS IN LOADED CONDITION, UNLOADED HEIGHT MAY BE ABOVE HEIGHT SHOWN. AFTER TRUCK IS COMPLETED ADDITIONAL STEPS DIMENSIONS SHOWN ARE APPROXIMATE AND ARE SUBJECT TO CHANGE AS MAY BE FOUND NECESSARY DURING DESIGN. DO NOT SCALE DRAWING.
8. MINOR DETAILS AND REFLECTIVE STRIPING ARE NOT SHOWN.



THIS DRAWING IS PROPERTY OF FORT GARRY FIRE TRUCKS LTD (FGFT) AND MUST NOT BE COPIED OR REPRODUCED IN ANY MANNER WITHOUT AUTHORIZATION OF FGFT.

MODEL:	ERS08H6	DESCRIPTION:	SAM DEMO
DATE:	17 OCT 2019	SCALE:	1:50
CHK. BY:	TV	WWW.FGFT.COM	
DWG. BY:	TV	WINNIPEG, MANITOBA, CANADA 1-800-565-3473	

1 OF 1
J0072 STK

REV	DESCRIPTION OF CHANGE	DATE
D	CHASSIS LAY OUT	20 FEB 2020
C	PPM DRAWING	09 JAN 2019
B	CUSTOMER SIGN OFF DRAWING	13 NOV 2019
A	CRM DRAWING	16 OCT 2019

REV	DESCRIPTION OF CHANGE	DATE
D	CHASSIS LAY OUT	20 FEB 2020
C	PPM DRAWING	09 JAN 2019
B	CUSTOMER SIGN OFF DRAWING	13 NOV 2019
A	CRM DRAWING	16 OCT 2019