



## STOCK – 12' RESCUE

All photos are for illustration purposes only.

***FORGED FROM FIRE, ENGINEERED FOR THE EXTREME!***



Sleek Dodge Ram 5500 Crew  
Cab 4x4 Chassis

Powerful Cummins 6.7L Turbo  
Diesel Engine, 325 HP

Heavy Duty Aluminum Body

LED Emergency Lighting

Outstanding Storage Capacity  
with thru-compartments

Please contact our sales department  
for more information.



Exclusive Distributors



**1-800-565-3473**

RR#2, 53 Bergen Cutoff Road, Winnipeg, MB R3C 2E6  
FX: 1-204-694-3230 [WWW.FGFT.COM](http://WWW.FGFT.COM)

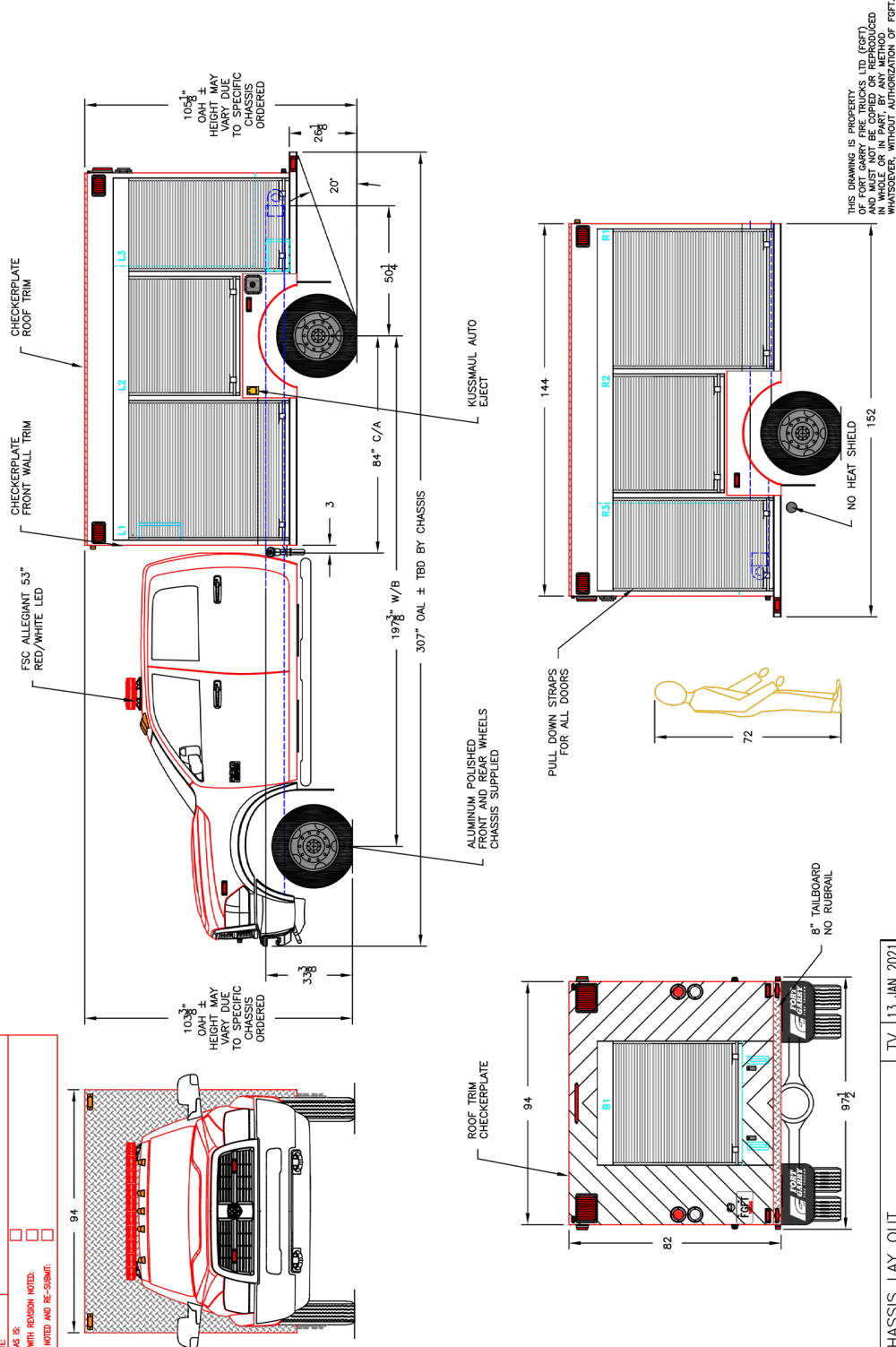


CUSTOMER APPROVAL		IF NOT RETURNED TO FGT BY THE DATE INDICATED BELOW, WE WILL PROCEED WITH FABRICATION AS PER THE DRAWING
SALES SIGNATURE		
CUSTOMER SIGNATURE:		
DATE:		
RETURN TO FGT BY:	DATE:	
REWORK BY:		
REVIEW DATE:		
ACCEPTED AS IS:		<input type="checkbox"/>
ACCEPTED WITH REVISION NOTED:		<input type="checkbox"/>
REUSE AS NOTED AND RE-SUBMIT:		<input type="checkbox"/>


BODY TYPE: FULL FRAMED

DOC. NO. : E018-1 DRAWING TEMPLATE  
REV. C 2017-02-05

DOC. NO. : E018-1  
REV. C 2017-02-05

[illegible]

D	CHASSIS LAY OUT	TV	13 JAN 2021
C	PPM DRAWING	JAR	18 NOV 2020
B	CUSTOMER SIGN OFF DRAWING	TV	03 SEP 2020
A	CRM DRAWING		
REV	DESCRIPTION OF CHANGE	BY	DATE

 <b>FORT GARRY</b> F I R E T R U C K S WWW.FGFCOM WINNIPEG, MANITOBA, CANADA 1-800-565-3473		DESCRIPTION: <b>ES12 STOCK UNIT</b>		MODEL: <b>ES12</b>		SHEET: <b>1 OF 1</b>	
SCALE: <b>1:45</b>		DWG. BY: <b>TV</b>		DATE: <b>03 SEP 2020</b>		DWG. NO.: <b>J0160 STK</b>	

BE FOUND NECESSARY DURING DESIGN. DO NOT SCALE DRAWING.  
 9. MAJOR DETAILS AND REFLECTIVE STRIPING ARE NOT SHOWN.